



At GMFRS we are having a major overhaul of some of our fire stations to make sure they are fit for the future.



PROPOSED BLACKLEY FIRE STATION

One of the stations being improved is Blackley. We are proposing to build a brand new fire station on the existing site over the next year.

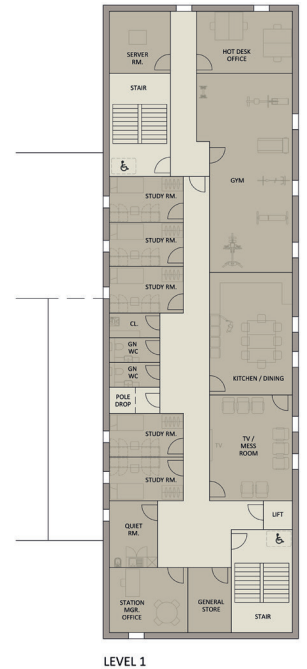
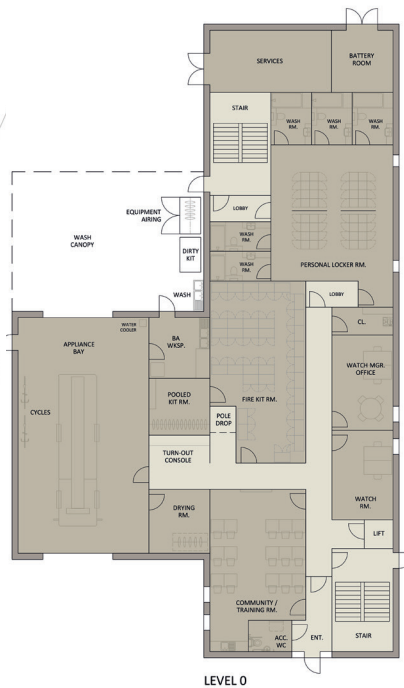
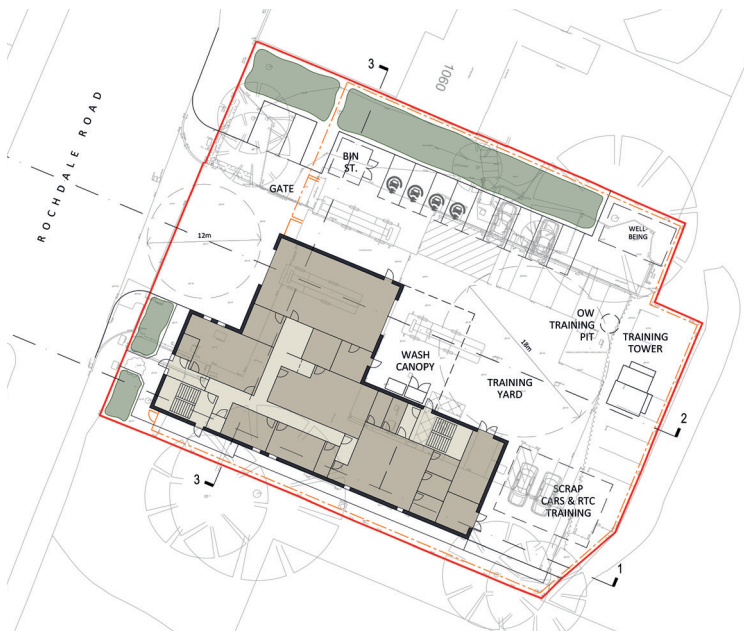
This multi-million pound investment will provide a modern, environmentally friendly fire station close by, with community facilities such as a room that local groups and organisations can use.

We've spent a lot of time over the last year talking to our partners and staff, but now we want to hear what the local community thinks.

If you'd like to find out more about our plans, including the proposed designs of both the inside and outside of the new fire station, and details of the drop-in session we'll be hosting, then scan the QR code.

If you'd like to submit your views on the plans, go to www.gmconsult.org

Please let us know what you think by Monday 13th March 2023



Thank you for taking the time to tell us what you think about our plans for a new fire station in Blackley.

To submit your response, you can:

- Go to www.gmconsult.org and respond digitally
- Drop this form at the fire station
- Take this form to the drop-in session and hand it to one of the project team
- Email a photograph of it to: engagement@greatermanchester-ca.gov.uk

Your thoughts on the proposals

1. Do you support our plans to demolish and rebuild a new fire station in Blackley?

- I strongly support the proposal
- I support the proposal
- I oppose the proposal
- I strongly oppose the proposal
- I don't have a view either way

2. Do you like the design of the proposed new fire station?

- Really like it
- Quite like it
- Don't like it
- Really don't like it
- I don't have a view either way

3. Do you support our plans to include and enhance the community facilities at the new fire station?

- I strongly support
- I support
- I oppose
- I strongly oppose
- I don't have a view either way

4. Do you support our plans to make our new fire stations more environmentally friendly to help us to meet Greater Manchester's target for being net zero by 2038?

- I strongly support
- I support
- I oppose
- I strongly oppose
- I don't have a view either way

5. Any other comments about what you like/dislike about the plans?

About you

We also want to ask some questions about you to ensure we're hearing from a range of people from the local area.

6. What is your postcode?

7. What best describes your gender?

- Male
- Female
- Prefer to self-describe

8. Age range

- Under 18
- 18 – 24
- 25 – 34
- 35 – 44
- 45 – 54
- 55 – 64
- 65 – 74
- Over 74

9. Ethnicity

Please state

10. Do you consider yourself to have a disability?

- Yes
- No
- Prefer not to say